

**BASIS OF BEARING**

THE SOUTH LINE OF THE SOUTHWEST QUARTER OF SECTION THIRTY-FIVE, TOWNSHIP TWO NORTH, RANGE SIXTY-EIGHT WEST OF THE SIXTH PRINCIPAL MERIDIAN AS MONUMENTED AND SHOWN HEREON IS ASSUMED TO BEAR N89°50'48"E.

**METROPOLITAN DISTRICT NO. 5**

**LEGAL DESCRIPTION**

A PARCEL OF LAND LOCATED IN SECTION THIRTY-FIVE, TOWNSHIP TWO NORTH, RANGE SIXTY-EIGHT WEST OF THE SIXTH PRINCIPAL MERIDIAN, COUNTY OF WELD, STATE OF COLORADO

COMMENCING AT THE NORTHEAST CORNER OF SECTION THIRTY-FIVE, TOWNSHIP TWO NORTH, RANGE SIXTY-EIGHT WEST OF THE SIXTH PRINCIPAL MERIDIAN FROM WHENCE THE SOUTH 1/4 CORNER OF SAID SECTION THIRTY-FIVE BEARS S26°40'06"W A DISTANCE OF 5952.93 FEET, THENCE S45°21'09"W A DISTANCE OF 42.75 FEET, THENCE S89°54'44"W A DISTANCE OF 208.04 FEET ALONG THE SOUTH RIGHT-OF-WAY LINE OF WELD COUNTY ROAD 16, THENCE S00°47'19"W A DISTANCE OF 208.03 FEET TO THE POINT OF BEGINNING;

THENCE S00°47'29"W A DISTANCE OF 208.02 FEET;

THENCE S89°54'46"W A DISTANCE OF 208.03 FEET;

THENCE N00°47'24"E A DISTANCE OF 208.02 FEET;

THENCE N89°54'46"E A DISTANCE OF 208.03 FEET MORE OR LESS TO THE POINT OF BEGINNING.

SAID DESCRIBED PARCEL OF LAND CONTAINS ±1.00 ACRES MORE OR LESS.

**METROPOLITAN DISTRICT NO. 5 - LEGAL DESCRIPTION**

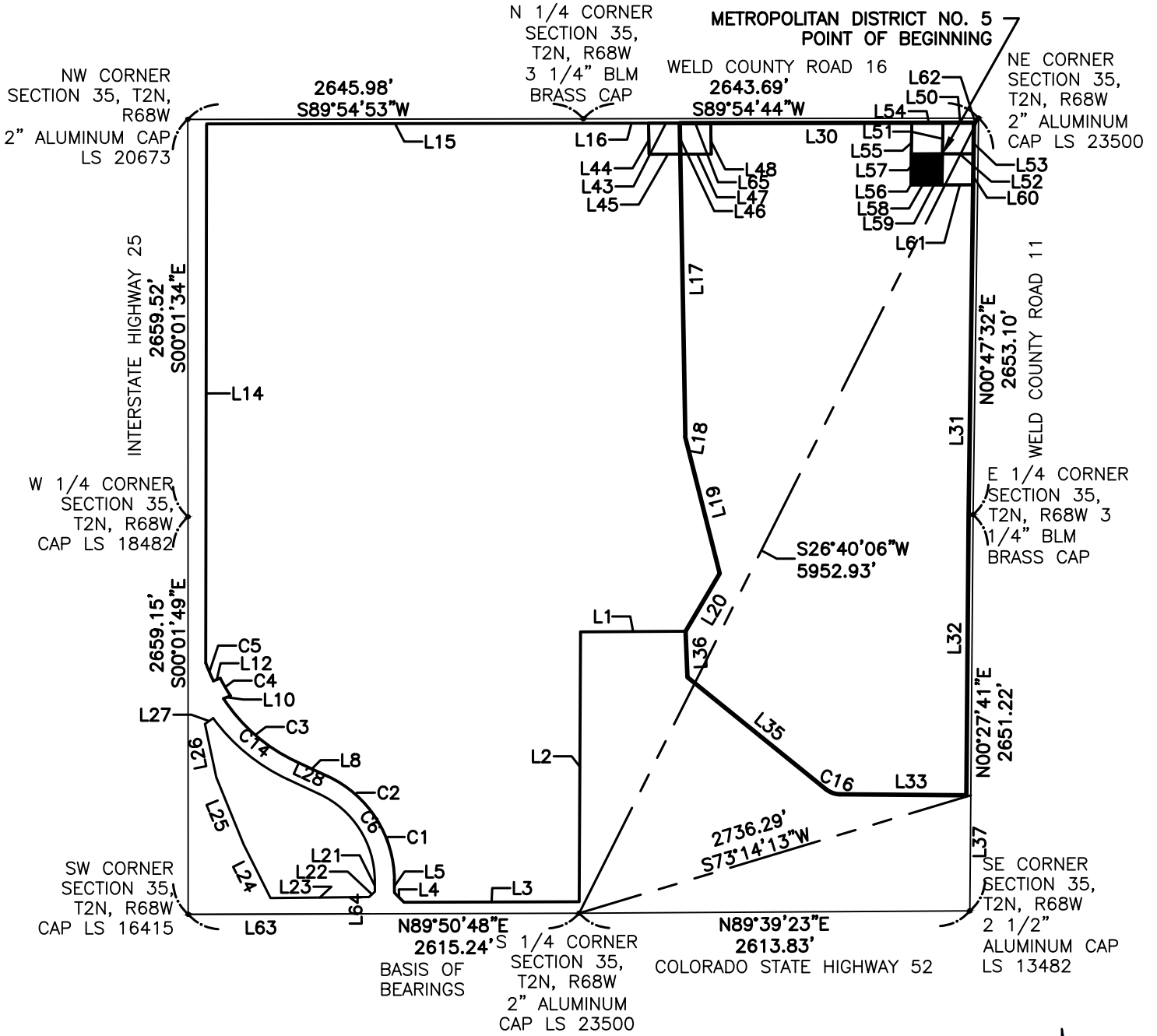
SHEET 1 OF 3



**LAMP RYNEARSON**  
& ASSOCIATES

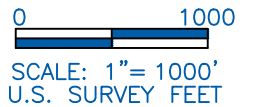
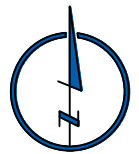
4715 Innovation Drive 970.226.0342 | P  
Fort Collins, CO 80525 970.226.0879 | F  
www.LRA-Inc.com

DRAWN BY | DESIGNED BY | REVIEWED BY | PROJECT - TASK NUMBER | DATE | BOOK AND PAGE | REVISIONS



**NOTES:**

1. THIS IS NOT A MONUMENTED LAND SURVEY, IT IS A COMPILATION OF THE NELSON - LANSON'S FARM - ZONING AMENDMENT MAP AND THE NELSON ANNEXATION.
2. UNITS ARE SHOWN IN U.S. SURVEY FOOT
3. BEARINGS ARE BASED ON THE SOUTH LINE OF THE SOUTHWEST QUARTER OF SECTION 35, T2N, RANGE 68W AS SHOWN ON THE NELSON - LANSON'S FARM - ZONING AMENDMENT MAP.



**METROPOLITAN DISTRICT NO. 5 - BOUNDARY MAP**

SHEET 2 OF 3



**LAMP RYNEARSON**  
& ASSOCIATES

4715 Innovation Drive 970.226.0342 | P  
Fort Collins, CO 80525 970.226.0879 | F  
www.LRA-Inc.com

DRAWN BY	DESIGNED BY	REVIEWED BY	PROJECT - TASK NUMBER	DATE	BOOK AND PAGE	REVISIONS
----------	-------------	-------------	-----------------------	------	---------------	-----------

# LINE TABLE

LINE TABLE		
LINE #	LENGTH	DIRECTION
L50	208.04'	S89°54'44"W
L51	208.03'	S00°47'19"W
L56	208.03'	S89°54'46"W
L57	208.02'	S00°47'24"W
L58	208.03'	S89°54'46"W
L59	208.02'	S00°47'29"W
L62	42.75'	S45°21'09"W

## METROPOLITAN DISTRICT NO. 5 - BOUNDARY MAP

SHEET 3 OF 3



**LAMP RYNEARSON**  
& ASSOCIATES

4715 Innovation Drive 970.226.0342 | P  
Fort Collins, CO 80525 970.226.0879 | F  
[www.LRA-Inc.com](http://www.LRA-Inc.com)

DRAWN BY

DESIGNED BY

REVIEWED BY

PROJECT - TASK NUMBER

DATE

BOOK AND PAGE

REVISIONS

PATH\FILENAME

P:\\_Engineering\0417028.01 Nelson MD\DRAWINGS\EXHIBITS\\_METRO  
DISTRICT\0417028.01\_LAYOUT\_MD\_5.dwg